



**ADJUDICATION RECORD**  
**PURSUANT TO SECTION 8A (1) (e) and 8A (1) (g) OF THE**  
**REGISTRATION OF TITLES CADASTRAL MAPPING AND TENURE CLARIFICATION (SPECIAL PROVISIONS) ACT**

SYSTEMATIC ADJUDICATION AREA : PARTS OF NEWTON St. Elizabeth

APPLICATION NO.	LAND INFORMATION								PERSONAL DETAILS			OCCUPANCY DETAILS							
	CADASTRAL MAP NUMBER	CADASTRAL MAP PARCEL NUMBER	LAND VALUATION NUMBER	AREA	PLACE	PARISH	VOLUME/FOLIO	PROPERTY ADDRESS	NATURE OF PARCEL	OWNER(S) DETAILS	NATURE BY WHICH LAND WAS ACQUIRED	NATURE OF OWNER DISBAILITY	NAME, ADDRESS AND OCCUPATION OF GUARDIAN	NATURE OF TITLE	DETAILS OF ENCUMBRANCES	RESTRICTIONS ON POWER TO DEAL WITH LAND	DETAILS OF PERSON ENTITLED TO BENEFIT OF RESTRICTION	DOCUMENTS PRESENTED	DATE OF COMPLETION OF APPLICATION FORM
ASD004196	CM1128010-554	112801003		601.0 Square Meter	NEWTON	St. Elizabeth		Newton District St.Elizabeth	Private	- Gary Brian Cooper Bricklayer of Newton District, Newton P.A. St. Elizabeth Jamaica	Gift			Absolute					2021-06-10
ASD004197	CM1128010-554	112801004		428.0 Square Meter	NEWTON	St. Elizabeth		Newton District, Newton P.A., St.Elizabeth	Private	- Glovis Bevin Anderson Bearer of Newton District Newton P.A. St. Elizabeth Jamaica - Karlette Anderson Teacher of Newton District Newton P.A. St. Elizabeth Jamaica	Purchase			Absolute				- Property Tax Receipts - Receipt	2021-07-06
ASD004808	CM1128010-554	112801005		934.0 Square Meter	NEWTON	St. Elizabeth	954/55	Newton District, Newton, St. Elizabeth	Private	- Sonia Audrey Morgan-Hinds DressMaker of Newton District, Newton P.A., St. Elizabeth Jamaica - Donovan Austin Hinds Businessman of Newton District Newton P.A. St. Elizabeth Jamaica	Possession			Absolute				- Property Tax Receipts - Receipt	2021-08-19
ASD004527	CM1128010-554	112801008		1012.0 Square Meter	NEWTON	St. Elizabeth		Newton District, Newton P.A. St.Elizabeth	Private	- Darlington Fitzroy Pinnock Farmer of Newton District St. Elizabeth Jamaica	Inheritance			Qualified					2021-08-14
ASD004200	CM1128010-554	112801009		3495.0 Square Meter	NEWTON	St. Elizabeth		Newton District, Newton P.A., St.Elizabeth	Private	- Beverley Sonia Holness Alias Miss Bev Higglor of Newton District Maggotty P.O. St. Elizabeth Jamaica	Possession			Absolute					2021-06-15
ASD004539	CM1128010-554	112801010		1021.0 Square Meter	NEWTON	St. Elizabeth		Newton District, St. Elizabeth	Private	- Cecil Colloniel Johnson of 934 E Carolina Avenue Florida United States	Inheritance			Absolute				- Property Tax Receipts - Death Certificate	2021-08-16
ASD004201	CM1128010-554	112801011		1027.0 Square Meter	NEWTON	St. Elizabeth		Newton District, Newton P.A., St.Elizabeth	Private	- Aldin Willard Malcolm Carpenter of Newton District Maggotty P.O. St. Elizabeth Jamaica	Possession			Absolute				- Survey Plan Examination No. : 153131 - Receipt	2021-06-15
ASD004202	CM1128010-554	112801013		1997.0 Square Meter	NEWTON	St. Elizabeth		Newton District, Newton P.A., St.Elizabeth	Private	- Dennison Patrick Johnson Fishmonger of Newton District, Newton P.A. St. Elizabeth Jamaica - Delores Edel Johnson Retired of Newton District, Newton P.A. St. Elizabeth Jamaica	Inheritance			Qualified				- Property Tax Receipts	2021-06-11
ASD004193	CM1128010-554	112801014		3002.0 Square Meter	NEWTON	St. Elizabeth		Newton District, Newton P.A., St.Elizabeth	Private	- Austin Cawley Pastor of Newton District Newton P.A. St. Elizabeth Jamaica	Possession			Absolute					2021-06-10
ASD004203	CM1128010-554	112801016		1499.0 Square Meter	NEWTON	St. Elizabeth		Newton District, Newton P.A., St.Elizabeth	Private	- Eda Foster Retiree of Newton District, Lacovia P.O. St. Elizabeth Jamaica	Inheritance			Absolute					2021-06-11
ASD004204	CM1128010-554	112801017		441.0 Square Meter	NEWTON	St. Elizabeth		Newton District St.Elizabeth	Private	- Dianne Gail Brown Home Health Aide of 164-14 110 Road, Jamaica New York United States	Purchase			Absolute				- Receipt	2021-06-18
ASD004205	CM1128010-554	112801020		3261.0 Square Meter	NEWTON	St. Elizabeth		Newton District St.Elizabeth	Private	- Leaford Alanzo Wilkie Farmer of Newton District Newton P.A. St. Elizabeth Jamaica	Inheritance			Absolute					2021-06-22
ASD004206	CM1128010-554	112801022		984.0 Square Meter	NEWTON	St. Elizabeth		Newton District St.Elizabeth	Private	- Gervis Andrew Robinson Farmer & Electrical Worker of Newton District, Newton P.A. St. Elizabeth Jamaica	Inheritance			Absolute					2021-06-18



**ADJUDICATION RECORD**  
**PURSUANT TO SECTION 8A (1) (e) and 8A (1) (g) OF THE**  
**REGISTRATION OF TITLES CADASTRAL MAPPING AND TENURE CLARIFICATION (SPECIAL PROVISIONS) ACT**

SYSTEMATIC ADJUDICATION AREA : PARTS OF NEWTON St. Elizabeth

APPLICATION NO.	LAND INFORMATION									PERSONAL DETAILS			OCCUPANCY DETAILS						
	CADASTRAL MAP NUMBER	CADASTRAL MAP PARCEL NUMBER	LAND VALUATION NUMBER	AREA	PLACE	PARISH	VOLUME/FOLIO	PROPERTY ADDRESS	NATURE OF PARCEL	OWNER(S) DETAILS	NATURE BY WHICH LAND WAS ACQUIRED	NATURE OF OWNER DISBAILITY	NAME, ADDRESS AND OCCUPATION OF GUARDIAN	NATURE OF TITLE	DETAILS OF ENCUMBRANCES	RESTRICTIONS ON POWER TO DEAL WITH LAND	DETAILS OF PERSON ENTITLED TO BENEFIT OF RESTRICTION	DOCUMENTS PRESENTED	DATE OF COMPLETION OF APPLICATION FORM
ASD004207	CM1128010-554	112801023		1129.0 Square Meter	NEWTON	St. Elizabeth		Newton District, Newton P.A., St.Elizabeth	Private	- Ricardo Alindo Samuels Alias Ricky Farmer of Newton District, Newton P.A. St. Elizabeth Jamaica - Damian Romaine Samuels Driver of Newton District, Newton P.A. St. Elizabeth Jamaica - Astley Anthony Samuels Electrician of Newton District, Newton P.A. St. Elizabeth Jamaica	Inheritance		Qualified						2021-06-11
ASD004587	CM1128010-554	112801025		1122.0 Square Meter	NEWTON	St. Elizabeth		Newton District, St. Elizabeth	Private	- Astley Anthony Samuels Electrician of Newton District, Newton P.A. St. Elizabeth Jamaica - Donna Samuels Registered Nurse of Newton District, Newton P.A. St. Elizabeth Jamaica	Possession		Absolute						2021-08-18
ASD004529	CM1128010-554	112801026		1395.0 Square Meter	NEWTON	St. Elizabeth		Newton District, Newton P.A, St.Elizabeth	Crown	- Commissioner of Lands A Corporation Sole established and existing under and by virtue of the provisions of the Crown Property (Vesting) Act of 20 North Street Kingston Jamaica	Special Provisions Act		Absolute						2021-08-14
ASD004194	CM1128010-554	112801027		291.0 Square Meter	NEWTON	St. Elizabeth		Newton District St.Elizabeth	Private	- Urica Robinson Farmer of Newton District, Newton P.A St. Elizabeth Jamaica	Gift		Absolute				- Survey Plan Examination No. : other		2021-06-11
ASD004493	CM1128010-554	112801028		978.0 Square Meter	NEWTON	St. Elizabeth		Newton District St.Elizabeth	Private	- Courtenay Robinson Alias Hayden Carpenter of 100 Erdman Place Apt 6B Bronx New York United States	Possession		Absolute				- Authorization Letter/Form		2021-06-11
ASD004626	CM1128010-554	112801030		586.0 Square Meter	NEWTON	St. Elizabeth		Newton District, Newton P.A., St.Elizabeth	Private	- Delores Edel Johnson Retired of Newton District, Newton P.A. St. Elizabeth Jamaica - Dennison Patrick Johnson Fishmonger of Newton District, Newton P.A. St. Elizabeth Jamaica	Possession		Qualified				- Property Tax Receipts		2021-06-11
ASD004208	CM1128010-554	112801032		1222.0 Square Meter	NEWTON	St. Elizabeth		Newton District St.Elizabeth	Private	- Audley Mcdermuth Wright Farmer of Newton District Newton P.A. St. Elizabeth Jamaica	Possession		Absolute						2021-06-18
ASD004209	CM1128010-554	112801033		1535.0 Square Meter	NEWTON	St. Elizabeth		Newton District St.Elizabeth	Private	- Austin Mascelene Cawley Retiree of Newton District Newton P.A. St. Elizabeth Jamaica	Purchase		Absolute						2021-06-18
ASD004210	CM1128010-554	112801035		294.0 Square Meter	NEWTON	St. Elizabeth		Newton District, Newton P.A., St.Elizabeth	Private	- Sumitra Ann-Leash Wright Shopkeeper of Newton District Newton P.A. St. Elizabeth Jamaica - Nicole Wrenae Thomas Businesswoman of Newton District Newton P.A. St. Elizabeth Jamaica - Malcolm Carlos Thomas of Newton District Newton P.A St. Elizabeth Jamaica - Danae Danae Bonitto of Newton District Newton P.A. St. Elizabeth Jamaica	Inheritance		Qualified						2021-07-07
ASD004211	CM1128010-554	112801036		315.0 Square Meter	NEWTON	St. Elizabeth		Newton District St.Elizabeth	Private	- Kirk Lushington Wright Farmer of Newton District, Newton P.A., Newton P.A. St. Elizabeth Jamaica	Inheritance		Absolute						2021-06-19
ASD004212	CM1128010-554	112801037		265.0 Square Meter	NEWTON	St. Elizabeth		Newton District St.Elizabeth	Private	- Leslie Collington Wright Farmer of Newton District, Newton P.A. St. Elizabeth Jamaica	Inheritance		Absolute						2021-06-19
ASD004213	CM1128010-554	112801039		1651.0 Square Meter	NEWTON	St. Elizabeth		Newton District St.Elizabeth	Private	- Joscelyn Ayton Roye Tech Consultant of Newton District, Newton P.A St. Elizabeth Jamaica	Inheritance		Qualified				- Last Will and Testament of : Raphael Roye		2021-06-19
ASD004214	CM1128010-554	112801040		396.0 Square Meter	NEWTON	St. Elizabeth		Newton District St.Elizabeth	Private	- Linton Egon Martin Alias Tarrie Farmer of Newton District Newton P.A. St. Elizabeth Jamaica	Possession		Absolute						2021-06-18



**ADJUDICATION RECORD**  
**PURSUANT TO SECTION 8A (1) (e) and 8A (1) (g) OF THE**  
**REGISTRATION OF TITLES CADASTRAL MAPPING AND TENURE CLARIFICATION (SPECIAL PROVISIONS) ACT**

SYSTEMATIC ADJUDICATION AREA : PARTS OF NEWTON St. Elizabeth

APPLICATION NO.	LAND INFORMATION									PERSONAL DETAILS				OCCUPANCY DETAILS					
	CADASTRAL MAP NUMBER	CADASTRAL MAP PARCEL NUMBER	LAND VALUATION NUMBER	AREA	PLACE	PARISH	VOLUME/FOLIO	PROPERTY ADDRESS	NATURE OF PARCEL	OWNER(S) DETAILS	NATURE BY WHICH LAND WAS ACQUIRED	NATURE OF OWNER DISBAILITY	NAME, ADDRESS AND OCCUPATION OF GUARDIAN	NATURE OF TITLE	DETAILS OF ENCUMBRANCES	RESTRICTIONS ON POWER TO DEAL WITH LAND	DETAILS OF PERSON ENTITLED TO BENEFIT OF RESTRICTION	DOCUMENTS PRESENTED	DATE OF COMPLETION OF APPLICATION FORM
ASD004513	CM1128010-554	112801041		641.0 Square Meter	NEWTON	St. Elizabeth		Newton District, Newton P.A., St. Elizabeth	Private	- Tibsy Veloris Palmer Housekeeping of 950 Shenton Place, Westchester St. Catherine Jamaica - Gena Palmer Housekeeper of 950 Shenton Place, Westchester Waterford P.O. St. Catherine Jamaica - Jesmin Adella Palmer Machine Operator of 950 Shenton Place Westchester, Waterford P.O. St. Catherine Jamaica	Inheritance		Absolute						2021-08-13
ASD004593	CM1128010-554	112801042		2225.0 Square Meter	NEWTON	St. Elizabeth		Newton District, St. Elizabeth	Private	- Gena Palmer Housekeeper of 950 Shenton Place, Westchester Waterford P.O. St. Catherine Jamaica - Imolyn Deloris Robinson-Samuels Poultry Farmer of Newton District, Newton P.A. St. Elizabeth Jamaica	Possession		Qualified						2021-08-18
ASD004215	CM1128010-554	112801043		612.0 Square Meter	NEWTON	St. Elizabeth		Newton District St.Elizabeth	Private	- Gena Palmer Housekeeper of 950 Shenton Place, Westchester Waterford P.O. St. Catherine Jamaica - Jesmin Adella Palmer Machine Operator of 950 Shenton Place Westchester, Waterford P.O. St. Catherine Jamaica - Tibsy Veloris Palmer Housekeeping of 950 Shenton Place, Westchester St. Catherine Jamaica	Possession		Qualified						2021-06-14
ASD004216	CM1128010-554	112801044		911.0 Square Meter	NEWTON	St. Elizabeth		Newton District, St.Elizabeth	Private	- Hopeton Robinson Alias Setta Shopkeeper of Newton District Newton P.A. St. Elizabeth Jamaica	Gift		Absolute					- Survey Plan Examination No. : other	2021-06-11
ASD004220	CM1128010-554	112801047		395.0 Square Meter	NEWTON	St. Elizabeth		Newton District St.Elizabeth	Private	- Garnett Alexander Brown Mason of Newton District Newton P.A. St. Elizabeth Jamaica	Possession		Absolute						2021-06-10
ASD004221	CM1128010-554	112801048		1217.0 Square Meter	NEWTON	St. Elizabeth		Newton District St.Elizabeth	Private	- Chicketa Clarke Alias Chick Chick Retired Domestic Worker of Newton District, Newton P.A. St. Elizabeth Jamaica	Possession		Absolute						2021-06-12
ASD004222	CM1128010-554	112801049		2068.0 Square Meter	NEWTON	St. Elizabeth		Newton District St.Elizabeth	Private	- Grantley Carlton Foster Alias Kemar, Biggs Security Supervisor of Newton District Newton P.A. St. Elizabeth Jamaica	Inheritance		Absolute					- Survey Plan Examination No. : property tax receipts - Last Will and Testament of : Melita Wynter	2021-06-10
ASD004809	CM1128010-554	112801051		2240.0 Square Meter	NEWTON	St. Elizabeth		Newton District St.Elizabeth	Private	- Joscelyn Ayton Roye Tech Consultant of Newton District, Newton P.A St. Elizabeth Jamaica	Inheritance		Qualified					- Last Will and Testament of : Raphael Roye	2021-06-19
ASD004224	CM1128010-554	112801052		187.0 Square Meter	NEWTON	St. Elizabeth		Newton District St.Elizabeth	Private	- Viris Mellicent Palmer Retiree of Newton District Newton P.A. St. Elizabeth Jamaica	Inheritance		Absolute					- Last Will and Testament of : Violet Palmer	2021-06-10
ASD004225	CM1128010-554	112801053		827.0 Square Meter	NEWTON	St. Elizabeth		Newton District St.Elizabeth	Private	- Hillette Josephine Forbes Caregiver of Apt 4B 1414 New York Avenue New York United States	Inheritance		Qualified					- Property Tax Receipts - Last Will and Testament of : Violet Palmer	2021-06-10
ASD004530	CM1128010-554	112801054		705.0 Square Meter	NEWTON	St. Elizabeth		Newton District, Newton P.A. St.Elizabeth	Private	- Alferd Brown Alias Ferdy Taxi Operator of Barton District, Newton P.A. St. Elizabeth Jamaica	Possession		Qualified						2021-08-16
ASD004446	CM1128010-554	112801055		1262.0 Square Meter	NEWTON	St. Elizabeth		Newton District, St. Elizabeth	Crown	- Commissioner of Lands A Corporation Sole established and existing under and by virtue of the provisions of the Crown Property (Vesting) Act of 20 North Street Kingston Jamaica	Special Provisions Act		Absolute						2021-08-12



**ADJUDICATION RECORD**  
**PURSUANT TO SECTION 8A (1) (e) and 8A (1) (g) OF THE**  
**REGISTRATION OF TITLES CADASTRAL MAPPING AND TENURE CLARIFICATION (SPECIAL PROVISIONS) ACT**

SYSTEMATIC ADJUDICATION AREA : PARTS OF NEWTON St. Elizabeth

APPLICATION NO.	LAND INFORMATION									PERSONAL DETAILS			OCCUPANCY DETAILS						
	CADASTRAL MAP NUMBER	CADASTRAL MAP PARCEL NUMBER	LAND VALUATION NUMBER	AREA	PLACE	PARISH	VOLUME/FOLIO	PROPERTY ADDRESS	NATURE OF PARCEL	OWNER(S) DETAILS	NATURE BY WHICH LAND WAS ACQUIRED	NATURE OF OWNER DISBAILITY	NAME, ADDRESS AND OCCUPATION OF GUARDIAN	NATURE OF TITLE	DETAILS OF ENCUMBRANCES	RESTRICTIONS ON POWER TO DEAL WITH LAND	DETAILS OF PERSON ENTITLED TO BENEFIT OF RESTRICTION	DOCUMENTS PRESENTED	DATE OF COMPLETION OF APPLICATION FORM
ASD004227	CM1128010-554	112801056		936.0 Square Meter	NEWTON	St. Elizabeth		Newton District St. Elizabeth	Private	- Raymond Pacheco Smith Farmer of Newton District, Newton P.A. St. Elizabeth Jamaica - Ainsley Bennett Mohorn Gardener of August Town, Kingston 7 St. Andrew Jamaica	Inheritance		Absolute						2021-06-14
ASD004228	CM1128010-554	112801057		2206.0 Square Meter	NEWTON	St. Elizabeth		Newton District St.Elizabeth	Private	- Elaine Clarke Teacher of 100 Herdman Place Apt 6 B Bronx New York United States - Malique Bennett Adult Student of 1312 Coral Street, Bogue Village, Montego Bay St. James Jamaica - Tasheca Bennett Physio-Therapist of 1312 Coral Street, Bogue Village, Montego Bay St. James Jamaica	Possession		Absolute						2021-06-11
ASD004229	CM1128010-554	112801058		441.0 Square Meter	NEWTON	St. Elizabeth		Newton District St.Elizabeth	Private	- Edmund Anthony Barrett Alias Beddy Farmer of Newton District, Newton P.A. St. Elizabeth Jamaica	Possession		Absolute						2021-06-13
ASD004230	CM1128010-554	112801061		623.0 Square Meter	NEWTON	St. Elizabeth		Newton District, Newton P.A., St.Elizabeth	Private	- Lucille May Daley Alias Miss Lus Retiree of Newton District Maggoty P.O. St. Elizabeth Jamaica	Possession		Absolute						2021-06-11
ASD004231	CM1128010-554	112801062		1528.0 Square Meter	NEWTON	St. Elizabeth		Newton District, St. Elizabeth	Private	- Winsome Pearline Smith nee Bennett Alias Pearl Housewife of Newton District, Newton P.A. St. Elizabeth Jamaica - Everoy Smith Business Man of Newton District, Newton P.A. St. Elizabeth Jamaica - Carmen Smith-Nation Teacher of Newton District, Newton P.A. St. Elizabeth Jamaica - Camille Rosemarie Aarons Physio-Therapist of Newton District, Newton P.A. St. Elizabeth Jamaica - Cleveland Smith Business Man of Newton District, Newton P.A. St. Elizabeth Jamaica	Inheritance		Qualified						2021-06-11
ASD004232	CM1128010-554	112801063		2953.0 Square Meter	NEWTON	St. Elizabeth		Newton District St.Elizabeth	Private	- Leslie Collington Wright Farmer of Newton District, Newton P.A. St. Elizabeth Jamaica - Kirk Lushington Wright Farmer of Newton District, Newton P.A., Newton P.A. St. Elizabeth Jamaica - Nicole Wrenae Thomas Business Woman of Newton District, Maggoty P.O. St. Elizabeth Jamaica	Inheritance		Absolute						2021-06-14
ASD004440	CM1128010-554	112801064		824.0 Square Meter	NEWTON	St. Elizabeth		Newton District, Newton P.A., St. Elizabeth	Private	- Richard Donovan Brown Farmer of Barton District, Maggoty P.O., St. Elizabeth St. Elizabeth Jamaica	Possession		Absolute						2021-08-12
ASD004233	CM1128010-554	112801065		811.0 Square Meter	NEWTON	St. Elizabeth		Newton District St.Elizabeth	Private	- Dalton Leacroft Brown Telecommunications Engineer of 8 Morningside Drive Kingston 19 St. Andrew Jamaica	Possession		Absolute						2021-07-06
ASD004234	CM1128010-554	112801066		2065.0 Square Meter	NEWTON	St. Elizabeth		Newton District, Newton P.A., St.Elizabeth	Private	- Dennison Patrick Johnson Alias Cattler Fishmonger of Newton District Maggoty P.O. St. Elizabeth Jamaica	Possession		Absolute						2021-06-11



**ADJUDICATION RECORD**  
**PURSUANT TO SECTION 8A (1) (e) and 8A (1) (g) OF THE**  
**REGISTRATION OF TITLES CADASTRAL MAPPING AND TENURE CLARIFICATION (SPECIAL PROVISIONS) ACT**

SYSTEMATIC ADJUDICATION AREA : PARTS OF NEWTON St. Elizabeth

APPLICATION NO.	LAND INFORMATION									PERSONAL DETAILS				OCCUPANCY DETAILS					
	CADASTRAL MAP NUMBER	CADASTRAL MAP PARCEL NUMBER	LAND VALUATION NUMBER	AREA	PLACE	PARISH	VOLUME/FOLIO	PROPERTY ADDRESS	NATURE OF PARCEL	OWNER(S) DETAILS	NATURE BY WHICH LAND WAS ACQUIRED	NATURE OF OWNER DISABILITY	NAME, ADDRESS AND OCCUPATION OF GUARDIAN	NATURE OF TITLE	DETAILS OF ENCUMBRANCES	RESTRICTIONS ON POWER TO DEAL WITH LAND	DETAILS OF PERSON ENTITLED TO BENEFIT OF RESTRICTION	DOCUMENTS PRESENTED	DATE OF COMPLETION OF APPLICATION FORM
ASD004435	CM1128010-554	112801067		575.0 Square Meter	NEWTON	St. Elizabeth		Newton District, Newton P.A., St. Elizabeth	Private	- Janese Angella Brown-Saunderson Food & Beverage Manager of 7 Fairfield Road, Spanish Town, St. Catherine St. Elizabeth Jamaica	Possession			Absolute					2021-08-12
ASD004235	CM1128010-554	112801068		3904.0 Square Meter	NEWTON	St. Elizabeth		Newton District St.Elizabeth	Private	- Antigo Lorenzo Samms Alias Tigo Retiree of 28 Norlington Road Leytonstone London United Kingdom	Possession			Absolute	lease				2021-06-18
ASD004589	CM1128010-554	112801069		806.0 Square Meter	NEWTON	St. Elizabeth		Newton District, St. Elizabeth	Crown	- Commissioner of Lands A Corporation Sole established and existing under and by virtue of the provisions of the Crown Property (Vesting) Act of 20 North Street Kingston Jamaica	Special Provisions Act			Absolute					2021-08-18
ASD004236	CM1128010-554	112801070		6030.0 Square Meter	NEWTON	St. Elizabeth		Newton District St.Elizabeth	Private	- Handel Leroy Watson Alias Bald Head Farmer of Newton District Newton P.A. St. Elizabeth Jamaica	Inheritance			Absolute	The parcel is to be held as one holding with parcel numbers 112801074 and 112801076			- Survey Plan Examination No. : property tax receipts	2021-06-10
ASD004542	CM1128010-554	112801071		5071.0 Square Meter	NEWTON	St. Elizabeth		Newton District, Newton P.A., St. Elizabeth	Private	- Aswin Hugh Beckford Plumber of 3744 Olinville Avenue New York United States - Erica Veronica Myers Retired Social Worker of 1433 Stratford Hall Court Georgia United States	Purchase			Absolute					2021-08-16
ASD004519	CM1128010-554	112801072		2353.0 Square Meter	NEWTON	St. Elizabeth		Newton District, Newton P.A., St. Elizabeth	Private	- Curtis Greg Wycliffe Hall Tailor of 82 Barnett Street, Montego Bay P.O. St. James Jamaica - Enid Millicent Whyte Vendor of 82 Barnett Street, Montego Bay St. James Jamaica	Possession			Absolute				- Receipt	2021-08-13
ASD004520	CM1128010-554	112801073		701.0 Square Meter	NEWTON	St. Elizabeth		Newton District, Newton P.A., St. Elizabeth	Private	- Orland Maurice Castillo Farmer of Newton Dist, Newton P.A., St. Elizabeth Jamaica	Inheritance			Qualified	lease				2021-08-13
ASD004237	CM1128010-554	112801074		786.0 Square Meter	NEWTON	St. Elizabeth		Newton District St.Elizabeth	Private	- Handel Leroy Watson Alias Bald Head Farmer of Newton District Newton P.A. St. Elizabeth Jamaica	Inheritance			Absolute	The parcel is to be held as one holding with Parcel Numbers 112801070 and 112801076				2021-06-10
ASD004238	CM1128010-554	112801075		475.0 Square Meter	NEWTON	St. Elizabeth		Newton District St.Elizabeth	Private	- Barrington Glannville Blake Alias Mr Barry Farmer of Newton District, Maggoty P.O. St. Elizabeth Jamaica	Purchase			Absolute				- Receipt	2021-06-18
ASD004239	CM1128010-554	112801076		688.0 Square Meter	NEWTON	St. Elizabeth		Newton District St.Elizabeth	Private	- Handel Leroy Watson Alias Bald Head Farmer of Newton District Newton P.A. St. Elizabeth Jamaica	Inheritance			Absolute	The parcel is to be held as one holding with Parcel Numbers 112801070 and 112801074				2021-06-10
ASD004240	CM1128010-554	112801077		1782.0 Square Meter	NEWTON	St. Elizabeth		Newton District, Newton P.A., St.Elizabeth	Private	- Vinnette Velecia Findley Teacher of Curataoe Hill, May Pen P.O. Clarendon Jamaica	Inheritance			Absolute					2021-06-22



**ADJUDICATION RECORD**  
**PURSUANT TO SECTION 8A (1) (e) and 8A (1) (g) OF THE**  
**REGISTRATION OF TITLES CADASTRAL MAPPING AND TENURE CLARIFICATION (SPECIAL PROVISIONS) ACT**

SYSTEMATIC ADJUDICATION AREA : PARTS OF NEWTON St. Elizabeth

APPLICATION NO.	LAND INFORMATION									PERSONAL DETAILS			OCCUPANCY DETAILS						
	CADASTRAL MAP NUMBER	CADASTRAL MAP PARCEL NUMBER	LAND VALUATION NUMBER	AREA	PLACE	PARISH	VOLUME/FOLIO	PROPERTY ADDRESS	NATURE OF PARCEL	OWNER(S) DETAILS	NATURE BY WHICH LAND WAS ACQUIRED	NATURE OF OWNER DISABILITY	NAME, ADDRESS AND OCCUPATION OF GUARDIAN	NATURE OF TITLE	DETAILS OF ENCUMBRANCES	RESTRICTIONS ON POWER TO DEAL WITH LAND	DETAILS OF PERSON ENTITLED TO BENEFIT OF RESTRICTION	DOCUMENTS PRESENTED	DATE OF COMPLETION OF APPLICATION FORM
ASD004242	CM1128010-554	112801079		691.0 Square Meter	NEWTON	St. Elizabeth		Newton District St.Elizabeth	Private	- Alma Ambrozie Martin Alias Ms. Alma Retired Clinic Assistant of Newton District, Newton P.A. St. Elizabeth Jamaica	Inheritance			Absolute	Right of Way				2021-06-18
ASD004195	CM1128010-554	112801080		2635.0 Square Meter	NEWTON	St. Elizabeth		Newton District St.Elizabeth	Private	- Nathalee Odette Watson Guidance Counsellor of Sterling District, Grange Hill P.O. Grangehill P.O. Westmoreland Jamaica	Inheritance			Qualified	lease				2021-06-11
ASD004447	CM1128010-554	112801081		451.0 Square Meter	NEWTON	St. Elizabeth		Newton District, Newton P.A., St. Elizabeth	Crown	- National Water Lands A Corporation Sole established and existing under and by virtue of the provisions of the Crown Property (Vesting) Act Kingston	Special Provisions Act			Absolute					2021-08-12
ASD004243	CM1128010-554	112801082		532.0 Square Meter	NEWTON	St. Elizabeth		Newton District St.Elizabeth	Private	- Nerissa Imogene Francis Alias Ms Imo Retiree of Newton District, Newton P.A. St. Elizabeth Jamaica - Antigo Lorenzo Samms Alias Tigo Retiree of 28 Norlington Road Leytonstone London United Kingdom	Inheritance			Absolute	Right of way				2021-06-18
ASD004244	CM1128010-554	112801083		419.0 Square Meter	NEWTON	St. Elizabeth		Newton District St.Elizabeth	Private	Jimmy Plummer of Good Hope District Kellits P.O. Clarendon Jamaica - Odette Andrea Roache Alias Odette Caregiver of Newton District, Newton P.A. St. Elizabeth Jamaica - Oniel Robert Roache Alias Oniel Tractor Operator of Newton District, Newton P.A St. Elizabeth Jamaica	Inheritance			Qualified					2021-06-18
ASD004245	CM1128010-554	112801084		1252.0 Square Meter	NEWTON	St. Elizabeth		Newton District, St. Elizabeth	Private	- Alethea Smith Alias Lisa Businesswoman of Barton District St. Elizabeth Jamaica	Inheritance			Absolute				- Survey Plan Examination No. : other	2021-06-11
ASD004246	CM1128010-554	112801085		1138.0 Square Meter	NEWTON	St. Elizabeth		Newton District St.Elizabeth	Private	- Alethea Smith Alias Lisa Businesswoman of Barton District St. Elizabeth Jamaica	Inheritance			Absolute					2021-06-15
ASD004247	CM1128010-554	112801086		614.0 Square Meter	NEWTON	St. Elizabeth		Newton District, Newton P.A., St.Elizabeth	Private	- Alethea Smith Alias Lisa Businesswoman of Barton District St. Elizabeth Jamaica	Inheritance			Absolute				- Survey Plan Examination No. : other	2021-06-11
ASD004248	CM1128010-554	112801087		1008.0 Square Meter	NEWTON	St. Elizabeth		Newton District St.Elizabeth	Private	- Alethea Smith Alias Lisa Businesswoman of Barton District St. Elizabeth Jamaica	Inheritance			Absolute					2021-06-15
ASD004249	CM1128010-554	112801088		2031.0 Square Meter	NEWTON	St. Elizabeth		Newton District, Newton P.A., St.Elizabeth	Private	- Mavernie Wright Wynter Retiree of Barton District Newton P.A. St. Elizabeth Jamaica	Possession			Absolute					2021-06-15
ASD004526	CM1128010-554	112801089		996.0 Square Meter	NEWTON	St. Elizabeth		Newton District, Newton P.A St.Elizabeth	Private	- Anthony Bernard Reid Retiree of 20705 Noth Miami Avenue Florida United States	Possession			Qualified				- Receipt	2021-08-14
ASD004250	CM1128010-554	112801090		1084.0 Square Meter	NEWTON	St. Elizabeth		Newton District St.Elizabeth	Private	- Ann-marie Camaleeta Patterson Alias Ann Caregiver of Newton District Newton P.A. St. Elizabeth Jamaica	Gift			Absolute	mortgage				2021-06-18
ASD004251	CM1128010-554	112801091		1599.0 Square Meter	NEWTON	St. Elizabeth		Newton District, St.Elizabeth	Crown	- Commissioner of Lands A Corporation Sole established and existing under and by virtue of the provisions of the Crown Property (Vesting) Act of 20 North Street Kingston Jamaica	Special Provisions Act			Absolute					2021-06-19



**ADJUDICATION RECORD**  
**PURSUANT TO SECTION 8A (1) (e) and 8A (1) (g) OF THE**  
**REGISTRATION OF TITLES CADASTRAL MAPPING AND TENURE CLARIFICATION (SPECIAL PROVISIONS) ACT**

SYSTEMATIC ADJUDICATION AREA : PARTS OF NEWTON St. Elizabeth

APPLICATION NO.	LAND INFORMATION									PERSONAL DETAILS			OCCUPANCY DETAILS						
	CADASTRAL MAP NUMBER	CADASTRAL MAP PARCEL NUMBER	LAND VALUATION NUMBER	AREA	PLACE	PARISH	VOLUME/FOLIO	PROPERTY ADDRESS	NATURE OF PARCEL	OWNER(S) DETAILS	NATURE BY WHICH LAND WAS ACQUIRED	NATURE OF OWNER DISABILITY	NAME, ADDRESS AND OCCUPATION OF GUARDIAN	NATURE OF TITLE	DETAILS OF ENCUMBRANCES	RESTRICTIONS ON POWER TO DEAL WITH LAND	DETAILS OF PERSON ENTITLED TO BENEFIT OF RESTRICTION	DOCUMENTS PRESENTED	DATE OF COMPLETION OF APPLICATION FORM
ASD004252	CM1128011-552	112801101		462.0 Square Meter	NEWTON	St. Elizabeth		Newton District, Newton P.A., St.Elizabeth	Private	- Natalie Kean Consultant of 47 Jones Ridge Drive, Ajax Ontario Canada	Possession			Absolute					2021-06-15
ASD004253	CM1128011-552	112801103		633.0 Square Meter	NEWTON	St. Elizabeth		Newton District, Newton P.A., St.Elizabeth	Private	- Theresa Kean Social Service Worker of 2006-40 Teesdale Place Toronto Ontario Canada	Possession			Absolute					2021-06-15
ASD004254	CM1128011-552	112801104		3837.0 Square Meter	NEWTON	St. Elizabeth		Newton District St.Elizabeth	Private	- Carrol Magdalene Rowe Farmer of Haughton District, Lacovia P.O. St. Elizabeth Jamaica - Novel Donovan Rowe Farmer of Haughton District, Lacovia P.O. St. Elizabeth Jamaica - Garrie Rowe Maintenance Technician of 1130 Magnolia Avenue, Camden New Jersey United States	Inheritance			Qualified				- Death Certificate	2021-06-21
ASD004427	CM1128011-552	112801107		1252.0 Square Meter	NEWTON	St. Elizabeth		Newton District, Newton P.A., St. Elizabeth	Crown	- Commissioner of Lands A Corporation Sole established and existing under and by virtue of the provisions of the Crown Property (Vesting) Act of 20 North Street Kingston Jamaica	Special Provisions Act			Absolute	lease				2021-08-12
ASD004255	CM1128011-552	112801108		551.0 Square Meter	NEWTON	St. Elizabeth		Newton District St.Elizabeth	Private	- Alfred Bob Wright Farmer of Newton District, Newton P.A. St. Elizabeth Jamaica	Possession			Absolute				- Property Tax Receipts	2021-06-19
ASD004256	CM1128011-552	112801110		2803.0 Square Meter	NEWTON	St. Elizabeth		Newton District St.Elizabeth	Private	- Deloris Bannar Wright Retiree of 402 South 9th Avenue, Mount Vernon New York United States	Inheritance			Absolute				- Property Tax Receipts	2021-06-21
ASD004586	CM1128011-552	112801111		1161.0 Square Meter	NEWTON	St. Elizabeth		Newton District, St. Elizabeth	Crown	- Commissioner of Lands A Corporation Sole established and existing under and by virtue of the provisions of the Crown Property (Vesting) Act of 20 North Street Kingston Jamaica	Special Provisions Act			Absolute					2021-08-18
ASD004551	CM1128011-552	112801112		840.0 Square Meter	NEWTON	St. Elizabeth		Newton District, St. Elizabeth	Crown	- Commissioner of Lands A Corporation Sole established and existing under and by virtue of the provisions of the Crown Property (Vesting) Act of 20 North Street Kingston Jamaica	Special Provisions Act			Absolute					2021-08-17
ASD004257	CM1128011-552	112801113		348.0 Square Meter	NEWTON	St. Elizabeth		Newton District St.Elizabeth	Private	- Ionie Silvia Henry Retiree of Newton District Maggotty P.O. St. Elizabeth Jamaica - Dawn Henry New York United States	Inheritance			Qualified				- Property Tax Receipts - Death Certificate	2021-06-10
ASD004258	CM1128011-552	112801114		1516.0 Square Meter	NEWTON	St. Elizabeth		Newton District St.Elizabeth	Private	- Shirley Marie Mullings Retired of 32 Autumn Glades Hemel Hempstead Hertfordshire United Kingdom	Possession			Qualified					2021-06-21
ASD004259	CM1128011-552	112801115		865.0 Square Meter	NEWTON	St. Elizabeth		Newton District St.Elizabeth	Private	- Ricardo Thompson Painter of Newton District Newton P.A. St. Elizabeth Jamaica	Possession			Absolute					2021-06-10
ASD004260	CM1128011-552	112801117		823.0 Square Meter	NEWTON	St. Elizabeth		Newton District St.Elizabeth	Private	- Jasmine Mureen Watson Farmer of Haughton District, Lacovia P.O. St. Elizabeth Jamaica - Mildred Winnifred Watson Farmer of Barton District, Newton P.A. St. Elizabeth Jamaica - Calvin Anthony Watson Construction Worker of 52 Augustus Drive, Independence City St. Catherine Jamaica - Janet Odean Watson Business Woman of Newton District, Newton P.A. St. Elizabeth Jamaica	Inheritance			Qualified				- Death Certificate	2021-06-21



**ADJUDICATION RECORD**  
 PURSUANT TO SECTION 8A (1) (e) and 8A (1) (g) OF THE  
 REGISTRATION OF TITLES CADASTRAL MAPPING AND TENURE CLARIFICATION (SPECIAL PROVISIONS) ACT

SYSTEMATIC ADJUDICATION AREA : PARTS OF NEWTON St. Elizabeth

APPLICATION NO.	LAND INFORMATION									PERSONAL DETAILS			OCCUPANCY DETAILS						
	CADASTRAL MAP NUMBER	CADASTRAL MAP PARCEL NUMBER	LAND VALUATION NUMBER	AREA	PLACE	PARISH	VOLUME/FOLIO	PROPERTY ADDRESS	NATURE OF PARCEL	OWNER(S) DETAILS	NATURE BY WHICH LAND WAS ACQUIRED	NATURE OF OWNER DISBAILITY	NAME, ADDRESS AND OCCUPATION OF GUARDIAN	NATURE OF TITLE	DETAILS OF ENCUMBRANCES	RESTRICTIONS ON POWER TO DEAL WITH LAND	DETAILS OF PERSON ENTITLED TO BENEFIT OF RESTRICTION	DOCUMENTS PRESENTED	DATE OF COMPLETION OF APPLICATION FORM
ASD004261	CM1128011-552	112801118		596.0 Square Meter	NEWTON	St. Elizabeth		Newton District, St. Elizabeth	Private	- Alisha Coke Farmer of Newton District, Newton P.A. St. Elizabeth	Possession			Absolute	Right of Way				2021-06-24
ASD004262	CM1128011-552	112801119		415.0 Square Meter	NEWTON	St. Elizabeth		Newton District St. Elizabeth	Private	- Claudette Margaret Buckley Cook of Newton District, Newton P.A. St. Elizabeth Jamaica	Possession			Absolute	Right of Way				2021-06-19
ASD004533	CM1128011-552	112801122		1246.0 Square Meter	NEWTON	St. Elizabeth		Newton District, St. Elizabeth	Private	- Rufus Agustos Farquharson Retired of Newton District, Newton P.A. St. Elizabeth Jamaica - Bennett Colonencia Farquharson Retired of Newton District, Newton P.A. St. Elizabeth Jamaica	Possession			Absolute				- Property Tax Receipts	2021-08-16
ASD004263	CM1128011-552	112801123		716.0 Square Meter	NEWTON	St. Elizabeth		Newton District St. Elizabeth	Private	- Donna AnnMarie Watson Businesswoman of Newton District, Newton P.A. St. Elizabeth Jamaica	Possession			Absolute	Applicant has an application with LAMP				2021-06-21
ASD004271	CM1128011-552	112801124		504.0 Square Meter	NEWTON	St. Elizabeth		Newton District, St. Elizabeth	Private	- Margaret Otalia Bennett Farmer of Newton District Newton P.A. St. Elizabeth Jamaica - Ucan Lionel Bennet Farmer of Newton District, Newton P.A. St. Elizabeth Jamaica	Possession			Absolute					2021-06-18





**ADJUDICATION RECORD**  
**PURSUANT TO SECTION 8A (1) (e) and 8A (1) (g) OF THE**  
**REGISTRATION OF TITLES CADASTRAL MAPPING AND TENURE CLARIFICATION (SPECIAL PROVISIONS) ACT**

SYSTEMATIC ADJUDICATION AREA : PARTS OF NEWTON St. Elizabeth

APPLICATION NO.	LAND INFORMATION									PERSONAL DETAILS			OCCUPANCY DETAILS						
	CADASTRAL MAP NUMBER	CADASTRAL MAP PARCEL NUMBER	LAND VALUATION NUMBER	AREA	PLACE	PARISH	VOLUME/FOLIO	PROPERTY ADDRESS	NATURE OF PARCEL	OWNER(S) DETAILS	NATURE BY WHICH LAND WAS ACQUIRED	NATURE OF OWNER DISBAILITY	NAME, ADDRESS AND OCCUPATION OF GUARDIAN	NATURE OF TITLE	DETAILS OF ENCUMBRANCES	RESTRICTIONS ON POWER TO DEAL WITH LAND	DETAILS OF PERSON ENTITLED TO BENEFIT OF RESTRICTION	DOCUMENTS PRESENTED	DATE OF COMPLETION OF APPLICATION FORM
ASD004264	CM1128011-552	112801125		722.0 Square Meter	NEWTON	St. Elizabeth		Newton District St.Elizabeth	Private	- Rayan Kanai Clarke Alias Lagga Carpenter of Newton District Newton P.A. St. Elizabeth Jamaica	Possession			Absolute					2021-06-15
ASD004265	CM1128011-552	112801126		792.0 Square Meter	NEWTON	St. Elizabeth		Newton District St.Elizabeth	Private	- Mariana Jennifer Watson Postal Agent of Newton District, Newton P.A. St. Elizabeth Jamaica	Possession			Absolute					2021-06-15
ASD004266	CM1128011-552	112801127		1088.0 Square Meter	NEWTON	St. Elizabeth		Newton District St.Elizabeth	Private	- Urica Robinson Farmer of Newton District, Newton P.A St. Elizabeth Jamaica	Inheritance			Absolute					2021-06-11
ASD004268	CM1128011-552	112801128		2399.0 Square Meter	NEWTON	St. Elizabeth		Newton District, Newton P.A., St.Elizabeth	Private	- Elderlyn Anderson Retired Home Attendant of Newton District Newton P.A. St. Elizabeth	Possession			Absolute					2021-06-15
ASD004590	CM1128011-552	112801129		3603.0 Square Meter	NEWTON	St. Elizabeth		Newton District, St. Elizabeth	Private	- Church of the Unity of the Brethren a company incorporated under the The Moravian Church Incorporation and Vesting Law, 1884 of 3 Hector Street, Kingston 5 St. Andrew Jamaica	Possession			Absolute					2021-08-18
ASD004269	CM1128011-552	112801130		397.0 Square Meter	NEWTON	St. Elizabeth		Newton District St.Elizabeth	Private	- Hemmerder Palmer Farmer of Newton District, Newton P.A. St. Elizabeth Jamaica - Dorrette Cowell Farmer of Newton District, Newton P.A. St. Elizabeth Jamaica - Islyn Sharon Evans House Keeper of Newton District, Newton P.A St. Elizabeth	Inheritance			Absolute				- Death Certificate	2021-06-19

This Adjudication Record is comprised of an Adjudication Register of claims to ownership rights and interests in parcels of land and a Cadastral Map. Some parcels have been excluded from the Adjudication Record as a result of requests for further subdivision of parcels, encroachments, parcels already registered etc..

The Adjudication Record was displayed in the Systematic Adjudication Area on **September 1, 2021** and shall remain on display for a period of THIRTY (30) days.

During this period, the Senior Director, Adjudication Services may amend any minor error or omission not materially affecting the interest of any person. Therefore, any Applicant who considers the Adjudication Record to be contain minor inaccuracies or omissions, may within THIRTY (30) days of the date of display of the Adjudication Record, submit the details of such inaccuracies or omissions in the prescribed Form and manner.

Any person who objects to an Applicant's claim to ownership rights and interests in a parcel of land on the Adjudication Record, may within THIRTY (30) days of the date of display of the said Record submit the grounds for objection in the prescribed Form and manner.

The prescribed Forms (Amendment of the Adjudication Record or Objection to the Adjudication Record) are available at any National Land Agency office or via the Agencies website at: [www.nla.gov.jm](http://www.nla.gov.jm)

All Requests for Amendment of the Adjudication Record or Objection to the Adjudication Record must be submitted using the prescribed Form to the Senior Director, Adjudication Services at:

National Land Agency  
 8 Ardenne Road  
 Kingston 10  
 Saint Andrew

Display Date: September 1, 2021

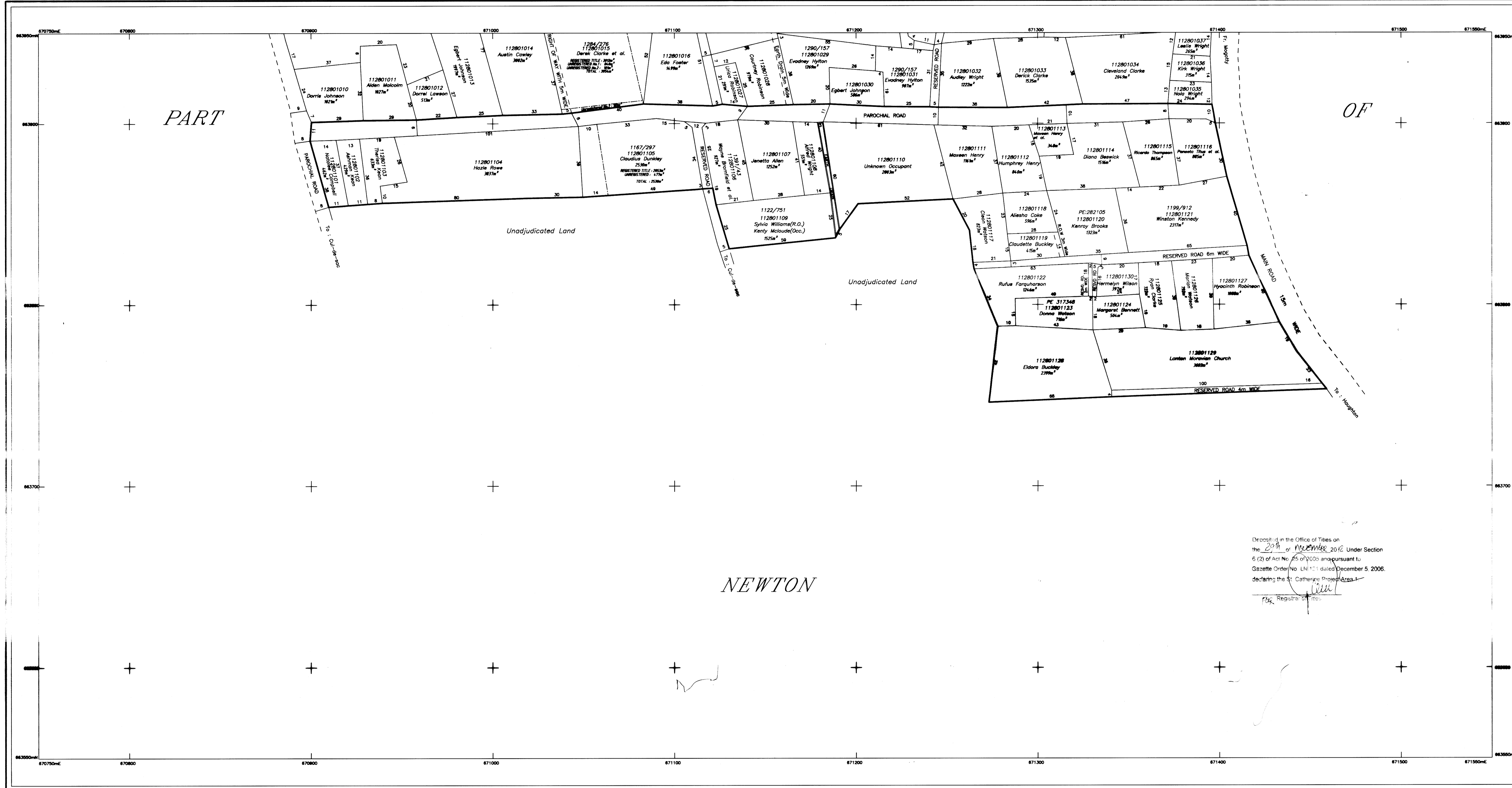
Senior Director, Adjudication Services:

LAMP BLOCK 28 - 552

Scale 1:1000 Cadastral Map

JAMAICA

LAMP BLOCK 28 - SHEET 011



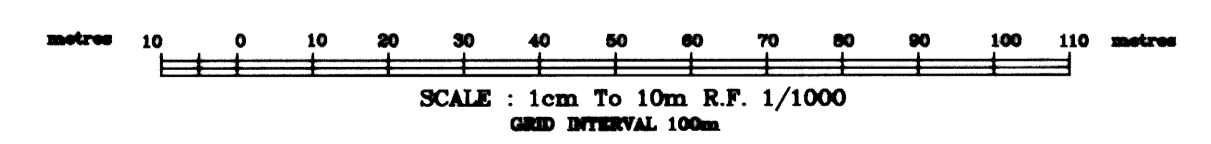
C111 1914751

L 11 28 011

Deposited in the Office of Titles on the 29th of December 2012 Under Section 6 (2) of Act No. 65 of 2006 and pursuant to Gazette Order No. L.N. 121 dated December 5, 2006, declaring the St. Catherine Project Area 1.

Reg. No. *[Signature]*

NEWTON



**NLA CADMAP CHECKED**  
*[Signature]*  
For Director of Surveys  
Date 2012/01/16

SURVEYORS: *[Signature]*  
PATRICK HENDRICKS  
COMMISSIONED LAND SURVEYOR  
GEOLAND TITLE LIMITED  
DATE: 2012/01/05

Parcel Count Table	
No. of Classification Parcels	4
No. of Repatriation Parcels	25
Total no. of Parcels	29

Example of Parcel Numbering			
Parcel	11		
Block		28	
Sheet			011
Parcel			41
Parcel #	112801141		

PREPARED BY  
GEOLAND TITLE LIMITED  
2 BELMONT ROAD  
KINGSTON 5  
TEL. 876 908-0192



**LEGEND**

Volume and Folio	----	1:100/747
Property Boundary	-----	
Deposited Plan Boundary	-----	
Gully/Drain/River	-----	
Registered Boundary	-----	

**SURVEY DATUM : JAD2001**  
Projection: Lambert Conical Orthomorphic with one Standard Parallel  
Spheroid: WGS 84  
Unit of Measurement: Metres  
Origin: 77 00 W of Greenwich  
False Co-ordinates of Origin: 18 00 N of the Equator  
Scale Factor of Origin: 750 000m Easting  
750 000m Northing  
1.000

Certified that the area delineated on this map form part of LAMP St. Elizabeth Project Area 1  
Gazetted at Order No. dated July 20, 2009  
Dated the 16th of January 2012  
*[Signature]*  
Director of Survey

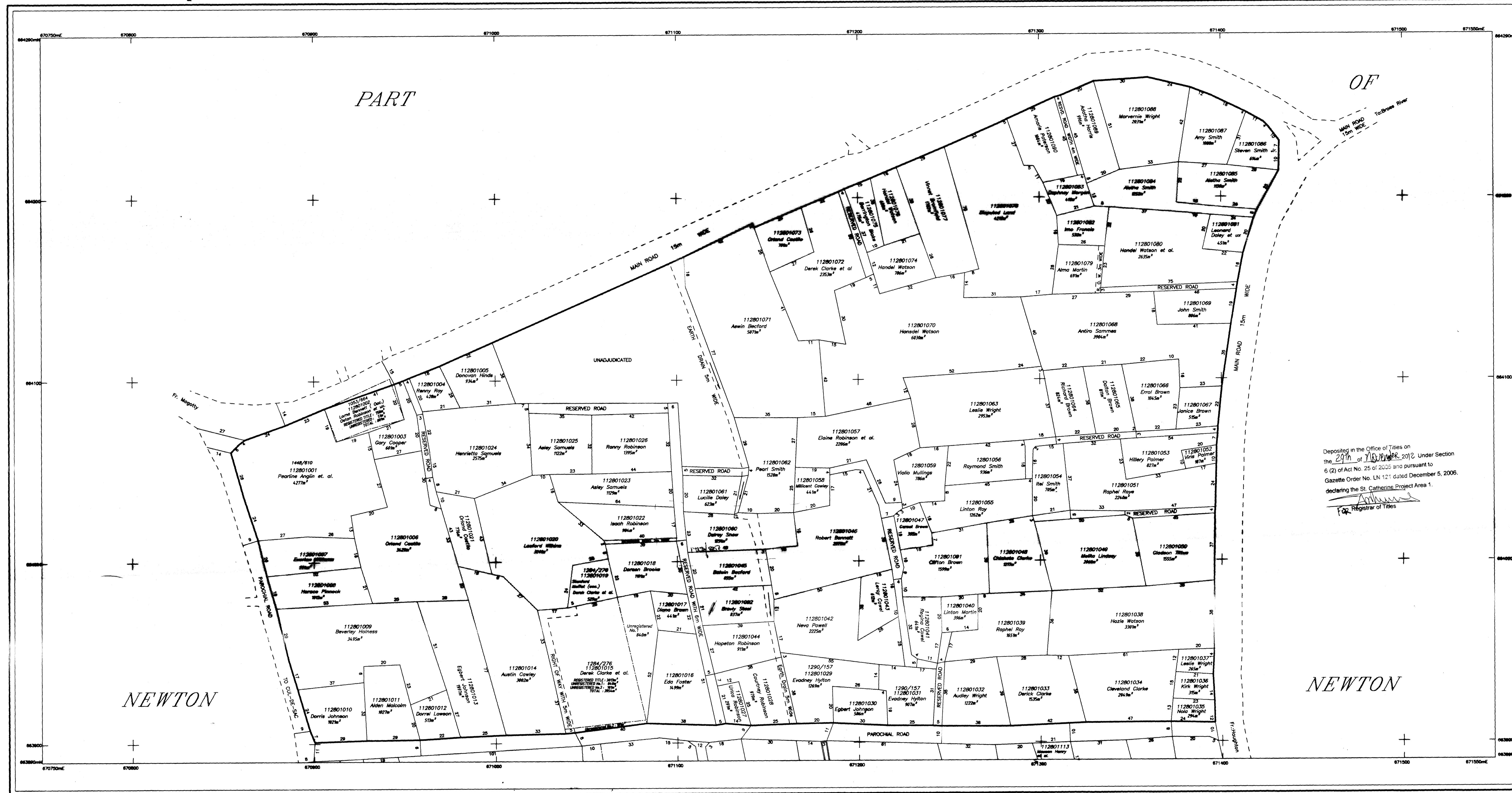
CADASTRAL MAP  
PART OF  
NEWTON  
ST. ELIZABETH

Compiled by GEOLAND Ltd. from Plans annexed to Registered Titles, Plans by the Survey Department, Cadastral Records certified of the Survey Department and Field observation of property boundaries.  
Completion Date: January 2011  
Users noting errors or omissions are asked to return map to the Survey and Mapping Division and it will be replaced.

Scale 1:1000 Cadastral Map

JAMAICA

LAMP BLOCK 28 - SHEET 010



Deposited in the Office of Titles on the 29th of 10/2012 Under Section 6 (2) of Act No. 25 of 2005 and pursuant to Gazette Order No. LN 121 dated December 5, 2006, declaring the St. Catherine Project Area 1.

*[Signature]*  
 Registrar of Titles

CM 1794762

L 11 28 010

**LEGEND**

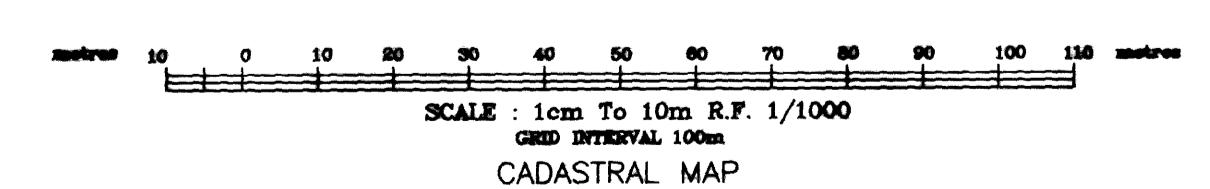
Volume and Folio	--- ---	MSA/MSR
Property Boundary	---	
Reported Plan Boundary	---	
Daily/Drain/River	---	
Registered Boundary	---	

**SURVEY DATUM : JAD2001**

Projection: Lambert Conformal Orthomorphic with one Standard Parallel  
 Spheroid: WGS 84  
 Unit of Measurement: Metres  
 Origin: 77 00 W of Greenwich  
 False Co-ordinates of Origin: 16 00 N of the Equator  
 Scale Factor at Origin: 750 000m Easting 600 000m Northing 1.000

Certified that the area delineated on this map forms part of LAMP St. Elizabeth Project Area 1  
 Gazetted at Order No. dated July 20, 2009  
 Dated the 16th of January 2012

*[Signature]*  
 Director of Survey



Compiled by GEOLAND Ltd. from Plans annexed to Registered Titles, Plans by the Survey Department, Cadastral Records certified by the Survey Department and Field observation of Property boundaries.

Compilation Date: January 2011

Users seeking areas of disturbance are asked to return maps to the Survey and Mapping Division and it will be replaced.

**NLA CADMAP CHECKED**

*[Signature]*  
 For Director of Survey  
 Date: 2012/01/16

Parcel Count Table

No. of Certificate Plans	4
No. of Registered Plans	48
Total no. of Plans	52

Example of Parcel Numbering

Parcel	11		
Block	28		
Sheet		010	
Plan			47
Parcel #	112801047		

**SURVEYORS : *[Signature]***  
 PATRICK HENDRICKS  
 COMMISSIONED LAND SURVEYOR  
 GEOLAND TITLE LIMITED

DATE: 2011/01/05

PREPARED BY  
 GEOLAND TITLE LIMITED  
 2 BELLEVUE ROAD  
 ROSEBURY 3  
 TEL: 678 888-8882

